

# Go green and receive our e-communications

As part of our sustainable initiatives towards a greener environment, **ENL Limited** ('ENL' or 'the Company') offers you, our shareholder, the possibility of receiving its communications electronically by e-mail: documents of a circular nature (such as annual reports and accounts), notices of meetings, credit advices and other shareholder documents and communications.

We are required under the Companies Act 2001 to ask you individually to confirm your agreement to us in writing, prior to providing you documents and information by e-mail or other electronic forms of communication.

In line with our data protection strategy at ENL, we also seize this opportunity to seek your consent through the shareholder consent form in respect of marketing communications sent to you.

Should you be agreeable to our proposal, kindly complete the shareholder consent form overleaf and return it to **MCB Registry & Securities Ltd, Sir William Newton Street, Port Louis**; in the prepaid envelope.

We thank you for supporting our effort in the construction of a more sustainable future and your continued interest in our Company. We encourage you to visit our website [www.enl.mu](http://www.enl.mu) for updates on ENL group and our investors' corner [www.enl.mu/investors](http://www.enl.mu/investors) dedicated to you.

## Benefits:



Easy access to  
your shareholder  
documents online



Receive the latest  
updates through  
our investor's alerts

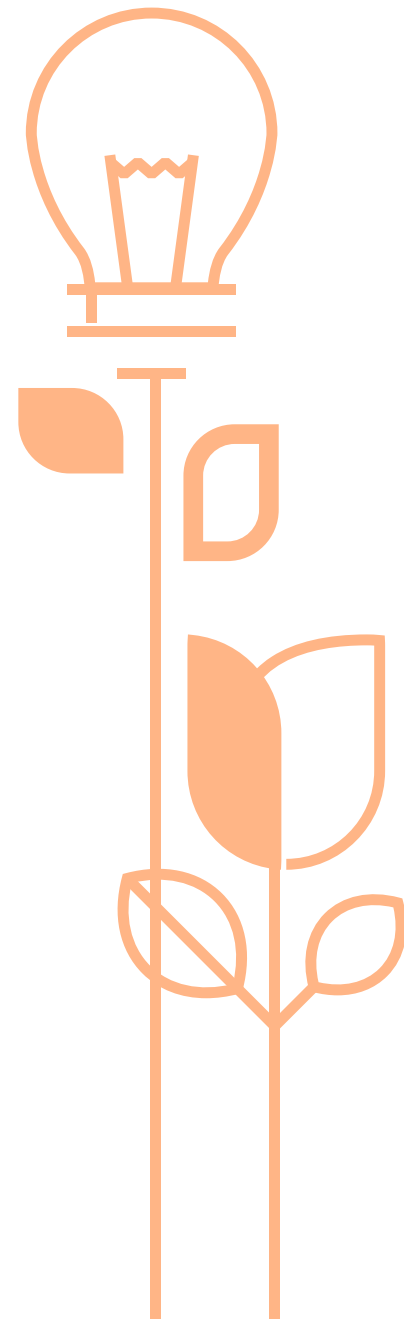


Protect the environment  
by reducing paper  
consumption

*Fill in the shareholder consent form overleaf and post it back in the prepaid envelope to opt-in to receive communications electronically*

### ENL Limited

ENL House | Vivéa Business Park | Moka | Mauritius  
 T. +230 404 9500 | F. +230 404 9565  
 [investors@enl.mu](mailto:investors@enl.mu) | [www.enl.mu](http://www.enl.mu)



# Shareholder consent form

My name is   
*Name of shareholder (primary shareholder as per register of shareholders in case of joint shareholding)*

*My National Identity Card Number (for individuals)*

*Business Registration Number (for corporate bodies)*

and I agree to receive all shareholder communications from ENL Limited on

**E-mail address**

and **my contact numbers** are

(Home/office):

(Mobile):

## Shareholder's consent in respect of marketing communications

*(Please tick the box below if you are agreeable)*

*You may consult ENL's Privacy Policy on [www.enl.mu/en/enl-privacy-policy](http://www.enl.mu/en/enl-privacy-policy) for further information on how we process your personal data.*

I agree to receive e-communications, promotional offers and updates from companies within ENL group.

- Yes, count me in.
- No, miss me out.

Signature: \_\_\_\_\_

Date: \_\_\_\_\_

First name\*: \_\_\_\_\_

Last name\*: \_\_\_\_\_

NIC/passport\*: \_\_\_\_\_

*\*for authorised signatory/ries of corporate bodies who warrant/s being duly authorised hereto*



## You, the above-named shareholder, agree to receive electronic communications herein subject to the terms below:

Upon receipt by ENL Limited ('ENL' or 'the Company') of this shareholder consent form duly signed by you, it is hereby understood and agreed by you that:

- You agree to receive by e-mail at the above e-mail address; notices of meetings, annual reports, financial statements and other shareholder documents and communications from ENL, as well as e-mail notifications if any from ENL advising you that documents of a circular nature (such as annual reports and accounts) have been posted on the Company's website.
- The issuance of paper notice of meetings, annual reports, accounts and other shareholder documents, shall be discontinued. However, in particular circumstances, ENL reserves the right to send documents or other information to its shareholders in hard copy rather than by e-mail.
- ENL shall not be held responsible for any failure in transmission beyond its control.
- The current instruction shall remain valid until written revocation is duly notified by you (or your duly authorised agent acting on your behalf) to MCB Registry & Securities Ltd, Sir William Newton Street, Port Louis.
- Although ENL takes reasonable precautions for safe transmission of any communication it sends out electronically, ENL shall not be liable for any loss or damage arising from any electronic communications from ENL and/or its service providers.
- ENL values your privacy and commit to process your personal data in accordance with applicable laws. Our privacy policy can be consulted on our website [www.enl.mu/en/enl-privacy-policy](http://www.enl.mu/en/enl-privacy-policy)
- You may withdraw your consent to marketing communications at any time by contacting our Data Protection Officer on [dataprotectionofficer@enl.mu](mailto:dataprotectionofficer@enl.mu) or by using the unsubscribe link in the emails.
- It is your responsibility to inform ENL of any change to your e-mail address and/or contact details.
- You shall hold ENL and/or its agents harmless against any liability arising from your present instructions and execution thereof.

### ENL Limited

ENL House | Vivéa Business Park | Moka | Mauritius

T. +230 404 9500 | F. +230 404 9565

[investors@enl.mu](mailto:investors@enl.mu) | [www.enl.mu](http://www.enl.mu)